



NOAA Technical Memorandum NMFS-AFSC-161

doi:10.7289/V5/TM-AFSC-161

# Alaska Marine Mammal Stock Assessments, 2005

by

R. P. Angliss and R. B. Outlaw



**U.S. DEPARTMENT OF COMMERCE**  
National Oceanic and Atmospheric Administration  
National Marine Fisheries Service  
Alaska Fisheries Science Center

December 2005

## GRAY WHALE (*Eschrichtius robustus*): Eastern North Pacific Stock

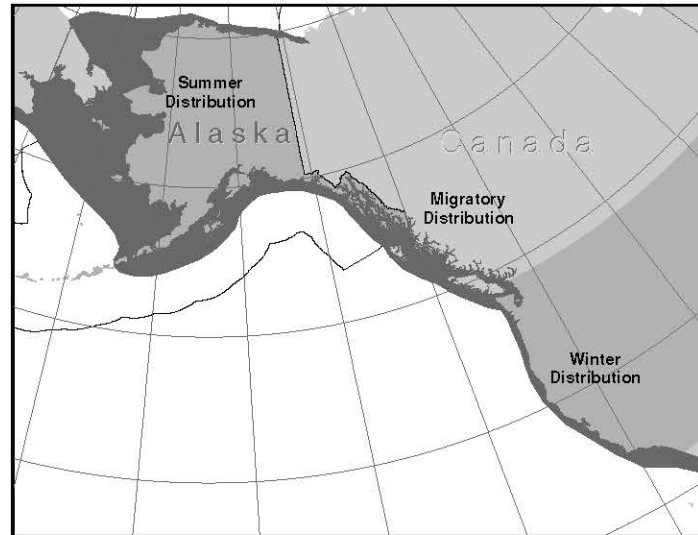
### STOCK DEFINITION AND GEOGRAPHIC RANGE

Gray whales formerly occurred in the North Atlantic Ocean (Fraser 1970, Mead and Mitchell 1984), but this species is currently found only in the North Pacific (Rice et al. 1984). The following information was considered in classifying stock structure of gray whales based on the phylogeographic approach of Dizon et al. (1992): 1) Distributional data: two isolated geographic distributions in the North Pacific Ocean; 2) Population response data: the eastern North Pacific population has increased, and no evident increase in the western North Pacific; 3) Phenotypic data: unknown; and 4) Genotypic data: unknown. Based on this limited information, two stocks have been recognized in the North Pacific: the Eastern North Pacific stock, which lives along the west coast of North America (Fig. 35), and the Western North Pacific or "Korean" stock, which lives along the coast of eastern Asia (Rice 1981, Rice et al. 1984). Most of the Eastern North Pacific stock spends the summer feeding in the northern Bering and Chukchi Seas (Rice and Wolman 1971, Berzin 1984, Nerini 1984). However, gray whales have been reported feeding in the summer in waters off of Southeast Alaska, British Columbia, Washington, Oregon, and California (Rice and Wolman 1971, Darling 1984, Nerini 1984, Rice et al. 1984). Each fall, the whales migrate south along the coast of North America from Alaska to Baja California, in Mexico (Rice and Wolman 1971), most of them starting in November or December (Rugh et al. 2001). The Eastern North Pacific stock winters mainly along the west coast of Baja California, using certain shallow, nearly landlocked lagoons and bays, and calves are born from early January to mid-February (Rice et al. 1981). The northbound migration generally begins in mid-February and continues through May (Rice et al. 1981, 1984; Poole 1984a), with cows and newborn calves migrating northward primarily between March and June along the U.S. West Coast.

While most North Pacific gray whales spend the summer in the shallow waters of the northern and western Bering Sea and Arctic Ocean, some animals feed along the Pacific coast. Photo-identification studies of these animals indicate that they move widely within and between areas on the Pacific coast, are not always observed in the same area each year, and may have several year gaps between resightings in studied areas (Calambokidis and Quan 1999, Quan 2000, Calambokidis et al. 2002). The so-called "Pacific coast feeding aggregation" defines one of the areas where feeding groups occur. While some animals in this group demonstrate some site-fidelity, available information from sighting records (Calambokidis and Quan 1999, Quan 2000) and genetics (Ramakrishnan et al. 2001, Steeves 1998) indicates that this group is a component of the eastern North Pacific population and is not an isolated population unit.

### POPULATION SIZE

Systematic counts of gray whales migrating south along the central California coast have been conducted by shore-based observers at Granite Canyon most years since 1967 (Fig. 36). The most recent abundance estimates are based on counts made during the 1997/98, 2000/01, and 2001/02 southbound migrations. Analyses of these data resulted in abundance estimates of 29,758 for 1997/98, 19,448 for 2000/01, and 18,178 for 2001/02 (Rugh et al. in press). Recent estimates were: 22,263 (CV = 9.25%) whales in 1995/96, 23,109 (CV = 5.42%) whales in 1993/94 (Laake et al. 1994) and 21,296 (CV = 6.05%) whales in 1987/88 (Buckland et al. 1993). Variations in estimates



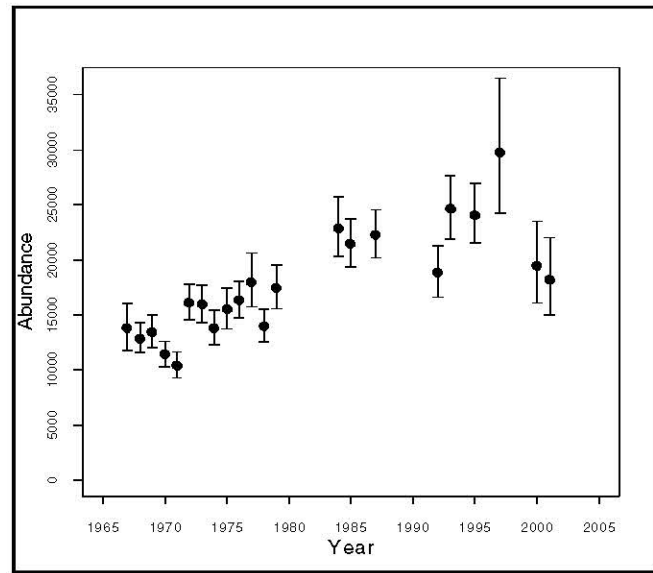
**Figure 35.** Approximate distribution of the Eastern North Pacific stock of gray whales (shaded area). Excluding some Mexican waters, the entire range of this stock is depicted.

may be due in part to undocumented sampling variation or to differences in the proportion of the gray whale stock migrating as far as the central California coast each year (Hobbs and Rugh 1999). The decline in the 2000/01 and 2001/02 abundance estimates may be an indication that the abundance was responding to environmental limitations as the population approaches the carrying capacity of its environment. Low encounter rates in 2000/01 and 2001/02 may have been due to an unusually high number of whales that did not migrate as far south as Granite Canyon or the abundance may have actually declined following high mortality rates observed in 1999 and 2000 (Gulland et al. 2005, Fig. 37). Visibly emaciated whales (LeBoeuf et al. 2000; Moore et al. 2001) suggest a decline in food resources, perhaps associated with unusually high sea temperatures in 1997 (Minobe 2002). Several factors since this mortality event suggest that the high mortality rate was a short-term, acute event and not a chronic situation or trend: 1) counts of stranded dead gray whales dropped to levels below those seen prior to this event, 2) in 2001 living whales no longer appeared to be emaciated, and 3) calf counts in 2001/02, a year after the event ended, were similar to averages for previous years (W. Perryman, NMFS-SWFSC, pers. comm.; Rugh et al. in press).

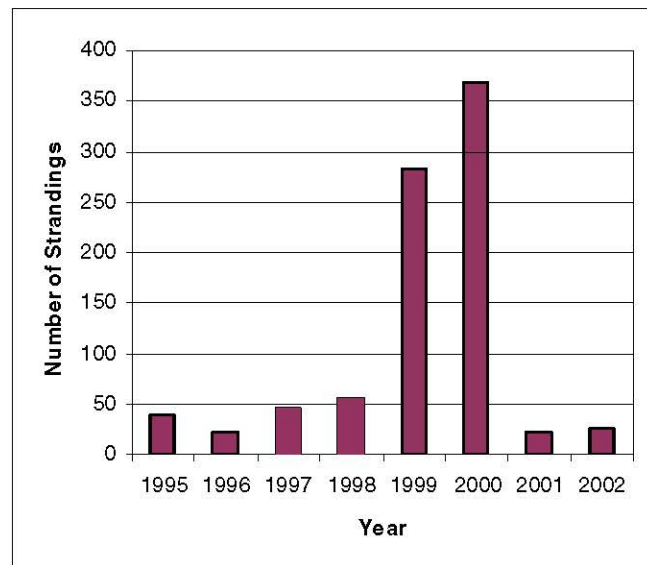
Gray whale calves were counted from Piedras Blancas, a shore site in central California, in 1980-81 (Poole 1984a) and each year since 1994 (Perryman et al. 2002, 2004). In 1980 and 1981, calves passing this site comprised 4.7% to 5.2% of the population (Poole 1984b). From 1994-2000, calf production indices (calf estimate/total population estimate) were 4.2%, 2.7%, 4.8%, 5.8%, 5.5%, 1.7% and 1.1%, respectively (Perryman et al. 2002). Gray whale calves have also been counted from the shore station at Granite Canyon during the southbound migration (Shelden et al. 1995, Shelden and Rugh 2001). Those results have indicated an apparent increase in the percentage of calf sightings from 0.0%-0.2% during 1952-74, 0.1%-0.9% during 1984-95 (Shelden et al. 1995), and 0.3%-1.5% during 1996-2001 (Shelden and Rugh 2001). This increase may be related to a trend toward later migrations over the observation period (Rugh et al. 2001, Buckland and Breiwick 2002), or it may be due to an increase in spatial and temporal distribution of calving as the population increased.

### Minimum Population Estimate

The minimum population estimate ( $N_{MIN}$ ) for this stock is calculated from Equation 1 from the PBR Guidelines (Wade and Angliss 1997):  $N_{MIN} = N/\exp(0.842 \times [\ln(1 + [CV(N)]^2)]^{1/2})$ . Using the mean of the 2000/01 and 2001/02 abundance estimates (not significantly different) of 18,813 and its associated CV of 0.069,  $N_{MIN}$  for this stock is 17,752.



**Figure 36.** Estimated abundance of Eastern North Pacific gray whales from NMFS counts of migrating whales past Granite Canyon, California. Error bars indicate 95% log-normal CI (after Rugh et al. in press).



**Figure 37.** Number of strandings of gray whales along the west coast of North America, 1995-2002. Low levels of strandings in 2001 and 2002 indicate that the stranding event of 1999-2000 was limited to those years.

### **Current Population Trend**

The population size of the Eastern North Pacific gray whale stock has been increasing over the past several decades. The estimated annual rate of increase, based on shore counts of southward migrating gray whales between 1967 and 1988, is 3.3% with a standard error of 0.44% (Buckland et al. 1993). Taking account of the harvest, Wade and DeMaster (1996) estimated an underlying annual rate of increase of 4.4% (95% CI: 3.1%-5.6%) for this same time period. Incorporating the census data through the 1993/94 migration resulted in an annual rate of increase of 2.6% (SE = 0.4%: IWC 1995). Breiwick (1999) estimated the annual rate of increase from 1967/68 to 1997/98 at 2.52% (95% CI: 2.04%-3.12%), and Wade and DeMaster (1996) estimated the annual rate of increase from 1967/68 to 1995/96 at 2.4% (95% CI: 1.6%-3.2%). Rugh et al. (In press) estimated the rate of increase from 1967/69 through 2001/02 at 1.9% (SE = 0.32%). They also fit a discrete logistic model to the abundance estimates resulting in an estimate of K (carrying capacity) of 26,290 (CV = 0.059).

In 1999 and 2000, a large number of gray whale strandings occurred along the west coast of North America between Baja California, Mexico, and the Bering Sea (Norman et al. 2000, Pérez-Cortés et al. 2000, Brownell et al. 2001, Gulland et al. 2005). A total of 273 gray whale strandings was reported in 1999 and 355 in 2000, compared to an average of 38 per year during the previous four years (Fig. 36). Gray whale strandings occurred throughout the year in both 1999 and 2000, but regional peaks of strandings occurred where and when the whales were in their migration cycle. Hypothesized reasons for the increased stranding rate in recent years include starvation, effects of chemical contaminants, natural toxins, disease, direct anthropogenic factors (fishery interactions and ship strikes), increased survey/reporting effort, and effects of wind and currents on carcass deposition (Norman et al. 2000). Since only 16 animals showed conclusive evidence of direct human interaction in 1999-2000, it seems unreasonable that direct anthropogenic factors were responsible for the increase in strandings. In addition, although survey effort has varied considerably in Mexico and Alaska, it has been relatively constant in Washington, Oregon, and California. The other hypotheses indicated have not yet been conclusively eliminated. However, assuming a 5% mortality rate for gray whales (Wade and DeMaster 1996), it would be reasonable to expect that approximately 1,300 gray whales would die annually of natural causes. Thus, while the stranding rate was certainly much higher in 1999 and 2000 than in previous years, it may not indicate a higher mortality rate. Preliminary stranding data indicate that the stranding event in 1999 and 2000 is over, as only 21 gray whale strandings were reported in 2001 (T. Rowles, NMFS-F/PR, pers. comm.). Reports from a portion of the stock's range indicate that only 5 and 6 strandings were reported in 2002 and 2003, respectively (C. Allen, NMFS-National Stranding Database, pers. comm.).

### **CURRENT AND MAXIMUM NET PRODUCTIVITY RATES**

Using abundance data through 1996, an analysis of the Eastern North Pacific gray whale population led to an estimate of  $R_{max}$  of 0.072, with a 90% probability the value was between 0.039 and 0.126 (Wade 2002). This estimate came from the best fitting age- and sex-structured model, which was a density-dependent Leslie model including an additional variance term, with females and males modeled separately. This estimate was higher than the estimate of  $R_{max}$  from a logistic model (0.053, 90% probability 0.031 to 0.113), which was not age- and sex-structured (Wade 2002). The Alaska Scientific Review Group recommended the use of the 0.053 point estimate for  $R_{max}$ . The difference in the two estimates of  $R_{max}$  is due to the bias in the harvest towards females, which is not accounted for in the logistic model. Therefore, NMFS has decided to use the estimate from the age- and sex-structured model, which had a lower 10th percentile of 0.047. This has the interpretation that there is a 90% probability that the true value of  $R_{max}$  is greater than 0.047. This is sufficient evidence that  $R_{max}$  for Eastern North Pacific gray whales is greater than the default value of 0.04. Therefore, NMFS will use a  $R_{max}$  of 0.047.

### **POTENTIAL BIOLOGICAL REMOVAL**

Under the 1994 reauthorized Marine Mammal Protection Act (MMPA), the potential biological removal (PBR) is defined as the product of the minimum population estimate, one-half the maximum theoretical net productivity rate, and a recovery factor:  $PBR = N_{MIN} \times 0.5R_{MAX} \times F_R$ . The recovery factor ( $F_R$ ) for this stock is 1.0, the upper limit of the range (0.5-1.0) of values for non-listed stocks which are increasing while undergoing removals due to subsistence hunters (Wade and Angliss 1997). Thus, for the Eastern North Pacific stock of gray whales,  $PBR = 417$  animals ( $17,752 \times 0.0235 \times 1.0$ ).

## ANNUAL HUMAN-CAUSED MORTALITY AND SERIOUS INJURY

### Fisheries Information

In previous stock assessments, there were six different observed federal commercial fisheries in Alaska that could have had incidental serious injuries or mortalities of gray whales. In 2004, the definitions of these commercial fisheries were changed to reflect target species: these new definitions have resulted in the identification of 22 observed fisheries in the Gulf of Alaska and Bering Sea that use trawl, longline, or pot gear (69 FR 70094, 2 December 2004). There were no observed serious injuries or mortalities of gray whales in any of those fisheries.

NMFS observers monitored the northern Washington marine set gillnet fishery (coastal + inland waters), otherwise known as the Makah tribal fishery for Chinook salmon, during 1990-98 and in 2000. There was no observer coverage in this fishery in 1999; however, the total fishing effort was only 4 net days (in inland waters), and no marine mammals were reported taken. One gray whale was observed taken in 1990 (Gearin et al. 1994) and one in 1995 (P. Gearin, unpubl. data). In July of 1996, one gray whale was entangled in the same tribal set gillnet fishery, but it was released unharmed (P. Gearin, AFSC-NMML, pers. comm.). Data from the most recent 5 years indicates that no gray whales were seriously injured or killed incidental to this fishery.

NMFS observers monitored the California/Oregon thresher shark/swordfish drift gillnet fishery from 1993 to 2003 (Table 39; Julian 1997; Cameron 1998; Julian and Beeson 1998; Cameron and Forney 1999, 2000; Carretta 2001, 2002; Carretta and Chivers 2003, 2004). One gray whale mortality was observed in this fishery in both 1998 and 1999. Overall entanglement rates in the California/Oregon thresher shark/swordfish drift gillnet fishery dropped considerably after the 1997 implementation of a Take Reduction Plan, which included skipper education workshops and required the use of pingers and minimum 6-fathom extenders on buoy lines (Barlow and Cameron 1999). Data from the most recent 5 years indicates that no gray whales were seriously injured or killed incidental to this fishery.

An additional source of information on the number of gray whales killed or injured incidental to commercial fishery operations is the logbook/self-reported fisheries information required of vessel operators by the MMPA. During the period between 1990 and 2003, logbook/fisher self-reports indicated 2 gray whale mortalities related to the Bristol Bay gillnet fisheries in 1990 and one gray whale mortality resulting from WA/OR/CA crab pot gear, resulting in an annual mean of 0.7 gray whale mortalities from interactions with commercial fishing gear. In 1990, logbook records from the Bristol Bay set and drift gillnet fisheries were combined. As it is not possible to determine which fishery was responsible for the gray whale mortalities reported in 1990, both fisheries have been included in Table 39. However, because logbook records are most likely negatively biased (Credle et al. 1994), these are considered to be minimum estimates. Logbook data are available for part of 1989-94, after which incidental mortality reporting requirements were modified. Under the new system, logbooks are no longer required; instead, fishers provide self-reports. Data for the 1994-95 phase-in period are fragmentary. After 1995, the level of reporting dropped dramatically, such that the records are considered incomplete and estimates of mortality based on them represent minimums (see Appendix 7 for details).

**Table 39.** Summary of incidental mortality of Eastern North Pacific gray whales due to commercial fisheries from 1990-2003 and calculation of the mean annual mortality rate. Mean annual mortality in brackets represents a minimum estimate from logbook/self-reports or stranding data. Data from 1999-2003 (or the most recent 5 years of available data) are used in the mortality calculation. N/A indicates that data are not available.

Fishery name	Years	Data type	Range of observer coverage	Observed mortality (in given yrs.)	Estimated mortality (in given yrs.)	Mean annual mortality
Bristol Bay salmon drift and set gillnet fisheries	90-03	logbook/self-reports	N/A	2, 0, 0, 0 1994-03: N/A	N/A	[≥0.5]
WA/OR/CA crab pot	90-03	logbook/self-reports	N/A	1990-02: N/A 2000: 1	N/A	[≥0.2]
Unknown west coast fisheries	93-03	strand data	N/A	0, 5, 3, 3, 6, 4, 3, 3, N/A, 2, N/A	N/A	[≥3.6]
AK salmon purse seine	99-03	strand data	N/A	1, N/A, N/A, N/A, N/A	N/A	[≥0.5]
Pot fisheries	99-03	strand data	N/A	1, 2, N/A, N/A, 3	N/A	[≥1.2]

Fishery name	Years	Data type	Range of observer coverage	Observed mortality (in given yrs.)	Estimated mortality (in given yrs.)	Mean annual mortality
CA yellowtail/barracuda/white seabass gillnet fishery	99-03	strand data	N/A	N/A, 1, N/A, N/A, N/A	N/A	[≥0.2]
Other entanglements	99-03	Strand data	N/A	1, 2, N/A, 2, 1	N/A	[≥1.2]
Minimum total annual mortality						≥7.4

Reports of entangled gray whales found swimming, floating, or stranded with fishing gear attached occur along the U.S. west coast and British Columbia. Details of strandings that occurred in 1993-95 and 1996-98 in the United States and British Columbia are described in Hill and DeMaster (1999) and Angliss et al. (2002), respectively; while Table 40 presents data on strandings that occurred on the U. S. west coast from 1999 to 2003; these data are summarized in Table 39. The strandings resulting from commercial fishing are listed as unknown west coast fisheries in Table 39, unless they could be attributed to particular fisheries. During the 5-year period from 1999 to 2003, stranding network data indicate a minimum annual mean of 7.4 gray whale mortalities resulting from interactions with commercial fishing gear.

**Table 40.** Human-related gray whale strandings and entanglements, 1999-2003. An asterisk in the “number” column indicates cases that were not considered serious injuries. Note: Due in part to concerns expressed by the Alaska Scientific Review Group, the guidelines for what should constitute a “serious injury” to a large cetacean are to be reviewed and revised, if necessary, by 2006. This review may result in changes to whether the animals identified in this table are considered “seriously injured”.

Year	Number	Area	Condition	Description
1999	1	Port Gravina, PWS, AK	Dead	Entangled in AK salmon purse seine net
1999	1	Bristol Bay, AK	Dead	Entangled
1999	1	Offshore North Coronado Is., CA	Non-fatal injury	Ship strike
1999	1	Wreck Creek, WA	Dead	Net wrapped around flukes
1999	1	Twin Harbors State Park, WA (Grayland)	Dead	Rope through mouth
1999	1	1.5 mi. offshore Rancho Palos Verdes, CA	Injury; status unknown	Pink gillnet & attached float wrapped around flukes; swimming w/difficulty; unable to dive
1999	1	10 mi. offshore Port Hueneme, CA	Dead	Wrapped in pot gear & associated floats
1999	1*	2 mi. offshore Crescent City, CA	Non-fatal injury	Crab pot line wrapped around flukes & mouth; disentangled by rescue team
1999	1*	3 mi. offshore Crescent City, CA	Released alive	Crab pot line wrapped around body; released from entangling gear
1999	1	Pt. Loma, CA	Dead	18" harpoon tip embedded in left dorsum
1999	1	Muir Beach, CA	Dead	Ship strike
2000	1	Depoe Bay, OR	Alive	Trailing fish line with longline buoys attached
2000	1	Brookings, OR	Alive	Head entangled in line
2000	1	Offshore Pt. Loma, CA	Status unknown	Trailing lobster pot gear
2000	1	Offshore San Clemente, CA	Status unknown	Yellow polypropylene line wrapped around flukes of free swimming whale
2000	1	Redwood National Park, CA	Dead	Ship strike
2000	1	Offshore Pt. Dume, CA	Status unknown	Line & buoys wrapped around flukes of free swimming whale
2000	1	Vandenberg AFB, CA	Dead	Lobster trap & rope wrapped around flukes

2000	1	Seal Beach, CA	Dead	White sea-bass gillnet wrapped around flukes
2000	1	Offshore Shelter Cove, CA	Injury; status unknown	Free-swimming whale with harpoon in back
2000	1	Offshore Aptos, CA	Status unknown	Fishing gear & floats wrapped around right pectoral flipper of free-swimming whale
2001	1	3 miles offshore Morro Bay	Live, likely mortality	Vessel collision with free-swimming abandoned calf; major injuries to caudal peduncle; flukes completely severed
2002	1*	Offshore Santa Barbara	Live, unknown	Free-swimming animal observed with yellow line wrapped around torso; no disentanglement initiated
2002	1	Offshore Pt. Vicente	Live, unknown	Free-swimming animal observed with yellow line wrapped around caudal peduncle; no disentanglement initiated
2002	1	Grays Harbor, WA	Dead	Yellow fishing gear (lines and net) wrapped around peduncle
2003	1	Offshore Morro Bay	Live, unknown	Free-swimming animal observed with crab pot gear trailing from right side of mouth (crab pot, 75 ft of yellow polypropylene line & 2 buoys); USCG vessel on site; no disentanglement initiated
2003	1	North Island Naval Air Station	Dead	15 foot calf with 3 foot length of yellow polypropylene line lodged in baleen
2003	1	2.5 miles off San Mateo Point	Live	Free-swimming animal observed with 150 ft of crab pot line and associated crab pot wrapped around head, torso & flukes; crew of commercial sportfishing vessel cut most of line and crab pot away; small amount of line remained wrapped around flukes (approximately 4 wraps); animal observed swimming strongly away after disentanglement
2003	1	Lands End Beach	Dead	25 ft calf; probable vessel collision; 2 propeller-like slashes through bone and baleen on right side of rostrum; broken rostrum
2003	1	Tillamook, OR	Dead	Crab pot line and buoy wrapped around flukes and caudal peduncle

It should be noted that no observers have been assigned to most Alaska gillnet fisheries, including those in Bristol Bay that are known to interact with this stock, making the estimated mortality from U.S. fisheries a minimum figure. Further, due to a lack of observer programs there are few data concerning the mortality of marine mammals incidental to Canadian commercial fisheries, which are analogous to U.S. fisheries that are known to interact with gray whales. Data regarding the level of gray whale mortality related to commercial fisheries in Canadian waters, though thought to be small, are not readily available or reliable which results in an underestimate of the annual mortality for this stock. However, the large stock size and observed rate of increase over the past 20 years makes it unlikely that unreported mortalities from those fisheries would be a significant source of mortality for the stock. The estimated minimum annual mortality rate incidental to commercial fisheries (7.4 whales; based on logbook/self-reports (0.7) or stranding reports (6.7) where observer data were not available) is not known to exceed 10% of the PBR (44.2) and, therefore, can be considered to be insignificant and approaching zero mortality and serious injury rate.

#### **Subsistence/Native Harvest Information**

Subsistence hunters in Alaska and Russia have traditionally harvested whales from this stock. The only reported takes by subsistence hunters in Alaska during this decade occurred in 1995, with the take of two gray

whales by Alaska Natives (IWC 1997). Russian subsistence hunters reported taking 43 whales from this stock in 1996 (IWC 1998a) and 79 in 1997 (IWC 1999). In 1997, the IWC approved a 5-year quota (1998-2002) of 620 gray whales, with an annual cap of 140, for Russian and U.S. (Makah Indian Tribe) aboriginals based on the aboriginal needs statements from each country (IWC 1998b). The U.S. and Russia have agreed that the quota will be shared with an average annual harvest of 120 whales by the Russian Chukotka people and 4 whales by the Makah Indian Tribe. Russian aboriginals harvested 121 (+2 struck and lost) in 1999 (IWC 2001), 113 (+2 struck and lost) in 2000 (Borodin 2001), 112 in 2001 (Borodin et al. 2002), 131 in 2002 (Borodin 2003), and 126 (+2 struck and lost) in 2003 (Borodin 2004), while the Makah Tribe harvested 1 whale in 1999 (IWC 2001). Based on this information, the annual subsistence take averaged 122 whales during the 5-year period from 1999 to 2003.

### **Other Mortality**

The nearshore migration route used by gray whales makes ship strikes another potential source of mortality. Between 1999 and 2003, the California stranding network reported 4 serious injuries or mortalities of gray whales caused by ship strikes: 1 each in 1999, 2000, 2001, and 2003 (J. Cordaro, NMFS-SWR, pers. comm.). One ship strike mortality was reported in Alaska in 1997 (B. Fadely, AFSC-NMML, pers. comm.). Additional mortality from ship strikes probably goes unreported because the whales either do not strand or do not have obvious signs of trauma. Therefore, it is not possible to quantify the actual mortality of gray whales from this source, and the annual mortality rate of 1.2 gray whales per year due to collisions with vessels represents a minimum estimate from this source of mortality.

In 1999 and 2000, the California stranding network reported gray whale strandings due to harpoon injuries (Table 40). A Russian harpoon tip was found in a dead whale that stranded in 1999 (R. Brownell, NMFS-SWFSC, pers. comm.), and an injured whale with a harpoon in its back was sighted in 2000. Since, these whales were likely harpooned during the aboriginal hunt in Russian waters, they would have been counted as “struck and lost” whales in the harvest data.

### **STATUS OF STOCK**

The Eastern North Pacific stock of gray whales has been increasing in recent years while being subjected to known harvests. Based on currently available data, the estimated annual level of human-caused mortality and serious injury (130.4), which includes mortalities from commercial fisheries (7.4), Russian harvest (122), and ship strikes (1), does not exceed the PBR (442). Therefore, the Eastern North Pacific stock of gray whales is not classified as a strategic stock. In 1994 this stock was removed from the List of Endangered and Threatened Wildlife (the List), as it was no longer considered endangered or threatened under the Endangered Species Act (ESA). As required by the ESA, NMFS monitored the status of this stock for 5 years following delisting. A workshop convened by NMFS on 16-17 March 1999 at the AFSC’s National Marine Mammal Laboratory in Seattle, WA, reviewed the status of the stock based on research conducted during the 5-year period following delisting. Invited workshop participants determined that the stock was neither in danger of extinction, nor likely to become endangered within the foreseeable future, therefore there was no apparent reason to reverse the previous decision to remove this stock from the List (Rugh et al. 1999). This recommendation was subsequently adopted by NMFS.

On 28 March 2001, NMFS received a petition from D. J. Schubert, on behalf of Australians for Animals, The Fund for Animals and several other organizations, to list the Eastern North Pacific stock of gray whales as threatened or endangered under the ESA. On 21 May 2001, NMFS determined that the petition did not present substantial scientific or commercial information sufficient to warrant the listing of this stock (66 FR 32305).

### **CITATIONS**

- Angliss, R. P., D. P. DeMaster, and A. Lopez. 2002. Alaska marine mammal stock assessments, 2001. U.S. Dep. Commer., NOAA Tech. Memo. NMFS-AFSC-124, 203 pp.
- Barlow, J., and G. A. Cameron. 1999. Field experiments show that acoustic pingers reduce marine mammal bycatch in the California drift gillnet fishery. Unpubl. doc. submitted to Int. Whal. Comm. (SC/51/SM2). 20 pp.
- Berzin, A. A. 1984. Soviet studies on the distribution and numbers of the gray whale in the Bering and Chukchi Seas from 1968 to 1982. Pp. 409-419 *In* M. L. Jones, S. L. Swartz, and S. Leatherwood (eds.), *The Gray Whale, Eschrichtius robustus*. Academic Press, Inc., Orlando. xxiv + 600 pp.
- Borodin, R. G. 2001. Aboriginal whaling in Chukotka waters in 2000. Unpubl. doc. submitted to Int. Whal. Comm. (SC/53/BRG23). 10 pp.



- Borodin, R. G. 2003. Report on the aboriginal subsistence whale harvest of the Russian Federation in 2002. Unpubl. doc. submitted to Int. Whal. Comm. (SC/55/BRG22). 22 pp.
- Borodin, R. G. 2004. Subsistence whale harvest of the Russian Federation in 2002. Unpubl. doc. submitted to Int. Whal. Comm. (SC/56/BRG49). 7 pp.
- Borodin, R. G., Blokhin, and D. Litovka. 2002. Historical and present information about the aboriginal whale harvest of Gray Whales in Chukotka, Russia. Unpubl. doc. submitted to Int. Whal. Comm. (SC/54/BRG27). 10 pp.
- Breiwick, J. W. 1999. Gray whale abundance estimates, 1967/68 - 1997/98: *ROI*, *RY*, and *K*. Pp. 62 *In* D. J. Rugh, M. M. Muto, S. E. Moore, and D. P. DeMaster, Status review of the Eastern North Pacific stock of gray whales. U.S. Dep. Commer., NOAA Tech. Memo. NMFS-AFSC-103, 96 pp.
- Brownell, R. L., Jr., L. Rojas Bracho, S. L. Swartz, J. Urban R., M. L. Jones, H. Perez-Cortes, W. Perryman, and D. P. DeMaster. 2001. Status of the eastern gray whale population: past and future monitoring. Unpubl. doc. submitted to Int. Whal. Comm. (SC/53/BRG21). 11 pp.
- Buckland, S. T., and J. M. Breiwick. 2002. Estimated trends in abundance of eastern Pacific gray whales from shore counts (1967/68 to 1995/96). *J. Cetacean Res. Manage.* 4(1):41-48.
- Buckland, S. T., J. M. Breiwick, K. L. Cattanach, and J. L. Laake. 1993. Estimated population size of the California gray whale. *Mar. Mammal Sci.* 9(3):235-249.
- Calambokidis, J., and J. Quan. 1999. Photographic identification research on seasonal resident whales in Washington State. Unpubl. doc. submitted to the Workshop to Review the Status of the Eastern North Pacific Stock of Gray Whales, 16-17 March 1999, Seattle, WA.
- Calambokidis, J., J. D. Darling, V. Deeke, P. Gearin, M. Gosho, W. Megill, C. M. Tombach, D. Goley, C. Toropova and B. Gisbourne. 2002. Abundance, range and movements of a feeding aggregation of gray whales (*Eschrichtius robustus*) from California and southeastern Alaska in 1998. *J. Cet. Res. Manage.* 4(3):267-276.
- Cameron, G. 1998. Cetacean mortality in California gillnet fisheries: preliminary estimates for 1997. Unpubl. doc. submitted to Int. Whal. Comm. (SC/50/SM2). 15 pp.
- Cameron, G. A., and K. A. Forney. 1999. Preliminary estimates of cetacean mortality in the California gillnet fisheries for 1997 and 1998. Unpubl. doc. submitted to Int. Whal. Comm. (SC/51/O4). 14 pp.
- Cameron, G. A., and K. A. Forney. 2000. Preliminary estimates of cetacean mortality in California/Oregon gillnet fisheries for 1999. Unpubl. doc. submitted to Int. Whal. Comm. (SC/52/O24). 12 pp.
- Carretta, J. V. 2001. Preliminary estimates of cetacean mortality in California gillnet fisheries for 2000. Unpubl. doc. submitted to Int. Whal. Comm. (SC/53/SM9). 21 pp.
- Carretta, J. V. 2002. Preliminary estimates of cetacean mortality in California gillnet fisheries for 2001. Unpubl. doc. submitted to Int. Whal. Comm. (SC/54/SM12). 22 pp.
- Carretta, J. V. and S. J. Chivers. 2003. Preliminary estimates of marine mammal mortality and biological sampling of cetaceans in California gillnet fisheries for 2002. Unpubl. doc. submitted to Int. Whal. Comm. (SC/55/SM3). 21 pp.
- Carretta J. V. and S. J. Chivers. 2004. Preliminary estimates of marine mammal mortality and biological sampling of cetaceans in California gillnet fisheries for 2003. Unpubl. doc. submitted to Int. Whal. Comm. (SC/56/SM1). 20 pp.
- Credle, V. R., D. P. DeMaster, M. M. Merklein, M. B. Hanson, W. A. Karp, and S. M. Fitzgerald (eds.). 1994. NMFS observer programs: minutes and recommendations from a workshop held in Galveston, Texas, November 10-11, 1993. U.S. Dep. Commer., NOAA Tech. Memo. NMFS-OPR-94-1, 96 pp.
- Darling, J. D. 1984. Gray whales off Vancouver Island, British Columbia. Pp. 267-287 *In* M. L. Jones, S. L. Swartz, and S. Leatherwood (eds.), *The Gray Whale, Eschrichtius robustus*. Academic Press, Inc., Orlando. xxiv + 600 pp.
- Dizon, A. E., C. Lockyer, W. F. Perrin, D. P. DeMaster, and J. Sisson. 1992. Rethinking the stock concept: a phylogeographic approach. *Conserv. Biol.* 6:24-36.
- Fraser, F. C. 1970. An early 17th century record of the California gray whale in Icelandic waters. *Invest. Cetacea* 2:13-20.
- Gearin, P. J., S. R. Melin, R. L. DeLong, H. Kajimura, and M. A. Johnson. 1994. Harbor porpoise interactions with a Chinook salmon set-net fishery in Washington State. *Rep. Int. Whal. Comm. (Special Issue 15):427-438.*

- Gulland, F.M.D., H. Pérez-Cortés M., J. Urbán R., L. Rojas-Bracho, G. Ylitalo, J. Weir, S.A. Norman, M.M. Muto, D.J. Rugh, C. Kreuder, and T. Rowles. 2005. Eastern North Pacific gray whale (*Eschrichtius robustus*) unusual mortality event, 1999-2000. U.S. Dep. of Commer., NOAA Tech. Memo. NMFS-AFSC-150, 33 pp.
- Hill, P. S., and D. P. DeMaster. 1999. Alaska marine mammal stock assessments, 1999. U.S. Dep. Commer., NOAA Tech. Memo. NMFS-AFSC-110, 166 pp.
- Hobbs, R. C., and D. J. Rugh. 1999. The abundance of gray whales in the 1997/98 southbound migration in the eastern North Pacific. Unpubl. doc. submitted to Int. Whal. Comm. (SC/51/AS10). 18 pp.
- Hobbs, R.C., D.J. Rugh, J.M. Waite, J.M. Breiwick and D.P. DeMaster. In press. Abundance of eastern North Pacific gray whales in the 1995/96 southbound migration. J. Cet. Res. Manage. 6(2):000-000.
- International Whaling Commission. 1995. Report of the Scientific Committee. Rep. Int. Whal. Comm. 45:53-95.
- International Whaling Commission. 1997. Chairman's Report of the 48th Annual Meeting. Rep. Int. Whal. Comm. 47:17-55.
- International Whaling Commission. 1998a. International Whaling Commission Report 1996-97. Rep. Int. Whal. Comm. 48:1-2.
- International Whaling Commission. 1998b. Chairman's Report of the 49th Annual Meeting. Rep. Int. Whal. Comm. 48:17-51.
- International Whaling Commission. 1999. International Whaling Commission Report 1997-98. Annual Report of the International Whaling Commission 1998:1-2.
- International Whaling Commission. 2001. International Whaling Commission Report 1999-2000. Annual Report of the International Whaling Commission 2000:1-3.
- Julian, F. 1997. Cetacean mortality in California gillnet fisheries: preliminary estimates for 1996. Unpubl. doc. submitted to Int. Whal. Comm. (SC/49/SM2). 13 pp.
- Julian, F., and M. Beeson. 1998. Estimates of marine mammal, turtle, and seabird mortality for two California gillnet fisheries: 1990-1995. Fish. Bull., U.S. 96(2):271-284.
- Laake, J. L., D. J. Rugh, J. A. Lerczak, and S. T. Buckland. 1994. Preliminary estimates of population size of gray whales from the 1992/93 and 1993/94 shore-based surveys. Unpubl. doc. submitted to Int. Whal. Comm. (SC/46/AS7). 13 pp.
- LeBoeuf, B. J., M. H. Perez Cortes, R. J. Urban, B. R. Mate, and U. F. Ollervides. 2000. High gray whale mortality and low recruitment in 1999: Potential causes and implications. J. Cet. Res. Manage. 2(2): 85-99.
- Mead, J.G. and E.D. Mitchell. 1984. Atlantic gray whales. Pp. 33-53 In M. L. Jones, S. L. Swartz, and S. Leatherwood (eds.), The Gray Whale, *Eschrichtius robustus*. Academic Press, Inc., Orlando. xxiv + 600 pp.
- Minobe, S. 2002. Interannual to interdecadal changes in the Bering Sea and concurrent 1998/99 changes over the North Pacific. Progr. Oceanogr. 55(1-2):45-64.
- Moore, S.E., J. Urbán R., W.L. Perryman, F. Gulland, H. Pérez-Cortés M., P.R. Wade, L. Rojas-Bracho and T. Rowles. 2001. Are gray whales hitting 'K' hard? Mar. Mammal Sci. 17(4):954-958.
- Nerini, M. 1984. A review of gray whale feeding ecology. Pp. 423-450 In M. L. Jones, S. L. Swartz, and S. Leatherwood (eds.), The Gray Whale, *Eschrichtius robustus*. Academic Press, Inc., Orlando. xxiv + 600 pp.
- Norman, S. A., M. M. Muto, D. J. Rugh, and S. E. Moore. 2000. Gray whale strandings in 1999 and a review of stranding records in 1995-1998. Final Draft, Unusual Mortality Event Report to the National Marine Fisheries Service. Unpubl. doc. submitted to Int. Whal. Comm. (SC/52/AS5). 36 pp.
- Pérez-Cortés, H., J. Urbán R., F. Ollervides, A. Gómez-Gallardo, J. I. Solis, and A. Eslimán. 2000. Report of the high gray whale mortality in the Baja California Peninsula during the 2000 season. Unpubl. doc. submitted to Int. Whal. Comm. (SC/52/AS16). 7 pp.
- Perryman, W. L., M. A. Donahue, P. C. Perkins, and S. B. Reilly. 2002. Gray whale calf production 1994-2000: are observed fluctuations related to changes in seasonal ice cover? Mar. Mammal Sci. 18(1):121-144.
- Perryman, W.L., G.M. Watters, L.K. Swartz and R.A. Rowlett. 2004. Preliminary results from shore-based surveys of northbound gray whale calves in 2003 and 2004, with a comparison to predicted numbers based on the distribution of seasonal ice. Paper SC/56/BRG43 presented to the IWC Scientific Committee, June 2004 (unpublished). 7pp.
- Poole, M. M. 1984a. Migration corridors of gray whales along the central California coast, 1980-1982. Pp. 389-407 In M. L. Jones, S. L. Swartz, and S. Leatherwood (eds.), The Gray Whale, *Eschrichtius robustus*. Academic Press, Inc., Orlando. xxiv + 600 pp.

- Poole, M. M. 1984b. Preliminary assessment of annual calf production in the gray whale, *Eschrichtius robustus*, from Pt. Piedras Blancas, California. Rep. Int. Whal. Comm. (Special Issue 6):223-231.
- Quan, J. 2000. Summer resident gray whales of Washington State: Policy, biological and management implications of Makah whaling. MS. Thesis. School of Marine Affairs, University of Washington. Seattle, WA.
- Ramakrishnan, U., R. G. LeDuc, J. Darling, B. L. Taylor, P. Gearin, M. Gosho, J. Calambokidis, R. L. Brownell, J. Hyde, and T. E. Steeves. 2001. Are the southern feeding group of Eastern Pacific gray whales a maternal genetic isolate? Rep. Int. Whal. Comm. SC53/SD8 5pp.
- Rice, D. W. 1981. Status of the eastern Pacific (California) stock of the gray whale. Pp. 181-187 *In* Food and Agriculture Organization. 1981. Mammals in the Seas. Vol. III. General Papers and Large Cetaceans. Food and Agriculture Organization, Rome, Italy.
- Rice, D. W., and A. A. Wolman. 1971. The Life History and Ecology of the Gray Whale, *Eschrichtius robustus*. Am. Soc. Mammal. Special Publication 3. 142 pp.
- Rice, D. W., A. A. Wolman, D. E. Withrow, and L. A. Fleischer. 1981. Gray whales on the winter grounds in Baja California. Rep. Int. Whal. Comm. 31:477-493.
- Rice, D. W., A. A. Wolman, and H. W. Braham. 1984. The gray whale, *Eschrichtius robustus*. Mar. Fish. Rev. 46(4):7-14.
- Rugh, D.J., R.C. Hobbs, J.A. Lerczak and J.M. Breiwick. In press. Estimates of abundance of the eastern North Pacific stock of gray whales 1997-2002. J. Cetacean Res. Manage.
- Rugh, D. J., M. M. Muto, S. E. Moore, and D. P. DeMaster. 1999. Status review of the Eastern North Pacific stock of gray whales. U.S. Dep. Commer., NOAA Tech. Memo. NMFS-AFSC-103, 96 pp.
- Rugh, D. J., K. E. W. Shelden, and A. Schulman-Janiger. 2001. Timing of the southbound migration of gray whales. J. Cetacean Res. Manage. 3(1):31-39.
- Shelden, K. E. W., and D. J. Rugh. 2001. Gray whale calf sightings in California during southbound migrations, 1995-2001. Unpubl. doc. submitted to Int. Whal. Comm. (SC/53/BRG4). 7 pp.
- Shelden, K. E. W., D. J. Rugh, and S. A. Boeve. 1995. Gray whale calf sightings during southbound migrations, 1952-95. Unpubl. doc. submitted to Int. Whal. Comm. (SC/47/AS4).
- Steeves, T. E. 1998. Genetic population structure of gray whales (*Eschrichtius robustus*) that summer in Clayoquot Sound, British Columbia. M.S. Diss. American University, Washington, D.C.
- Wade, P. R. 2002. A Bayesian stock assessment of the eastern North Pacific gray whale using abundance and harvest data from 1967 to 1996. J. Cetacean Res. Manage. 4(1):85-98.
- Wade, P. R., and R. Angliss. 1997. Guidelines for assessing marine mammal stocks: report of the GAMMS workshop April 3-5, 1996, Seattle, Washington. U.S. Dep. Commer., NOAA Tech. Memo. NMFS-OPR-12, 93 pp.
- Wade, P. R., and D. P. DeMaster. 1996. A Bayesian analysis of eastern Pacific gray whale population dynamics. Unpubl. doc. submitted to Int. Whal. Comm. (SC/48/AS3). 21 pp.